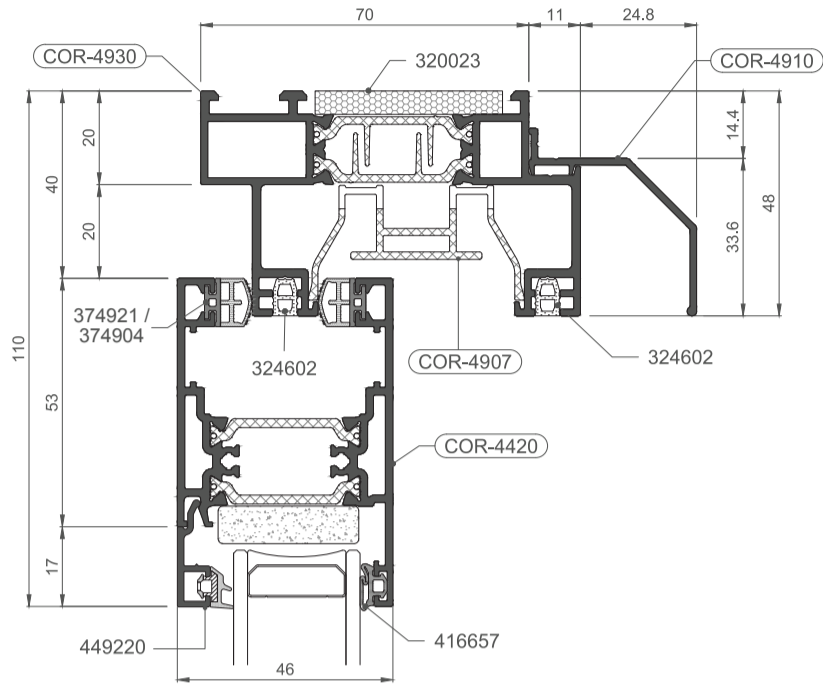
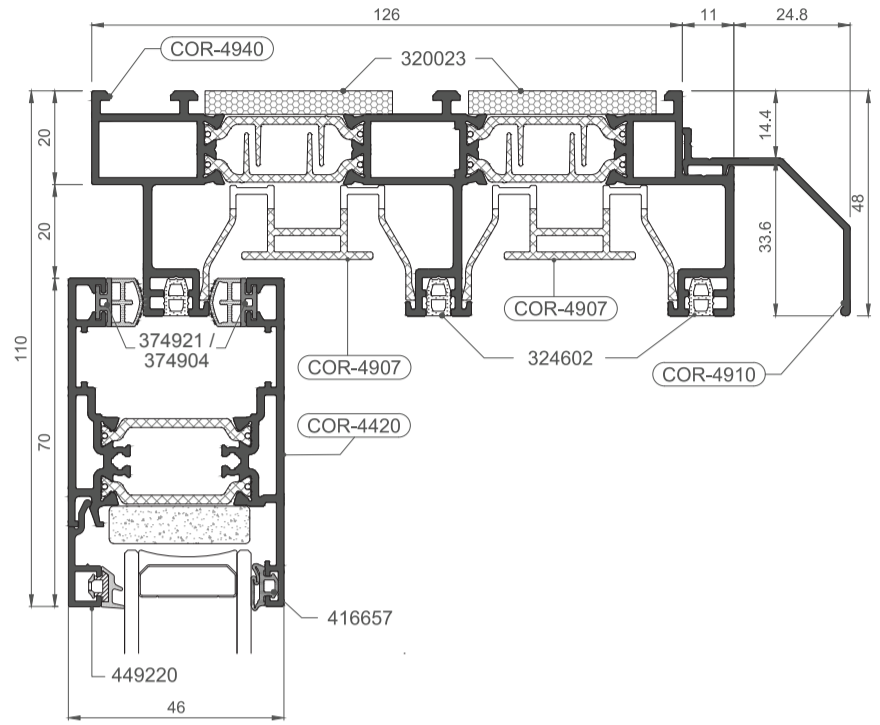


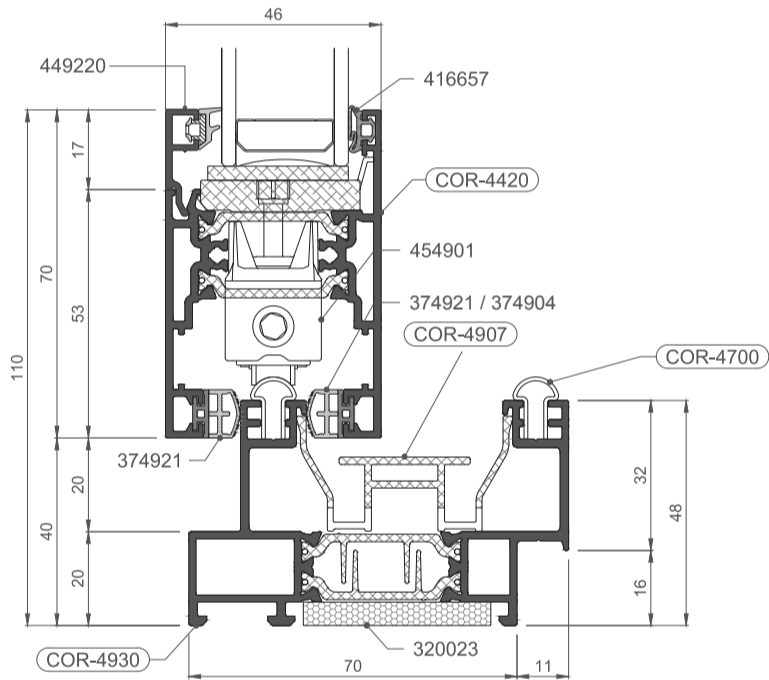
**Double-Track Top**



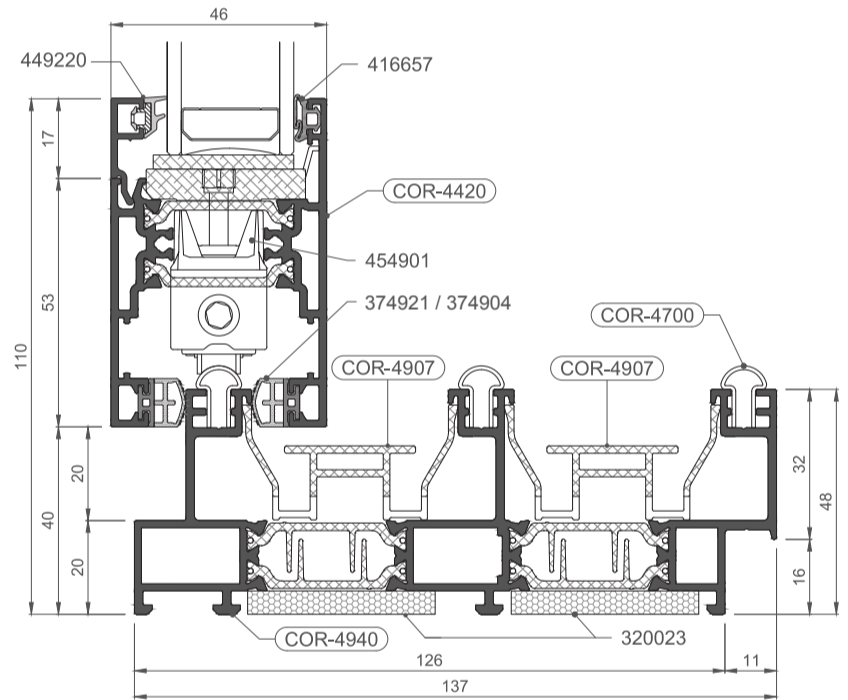
**Triple-Track Top**



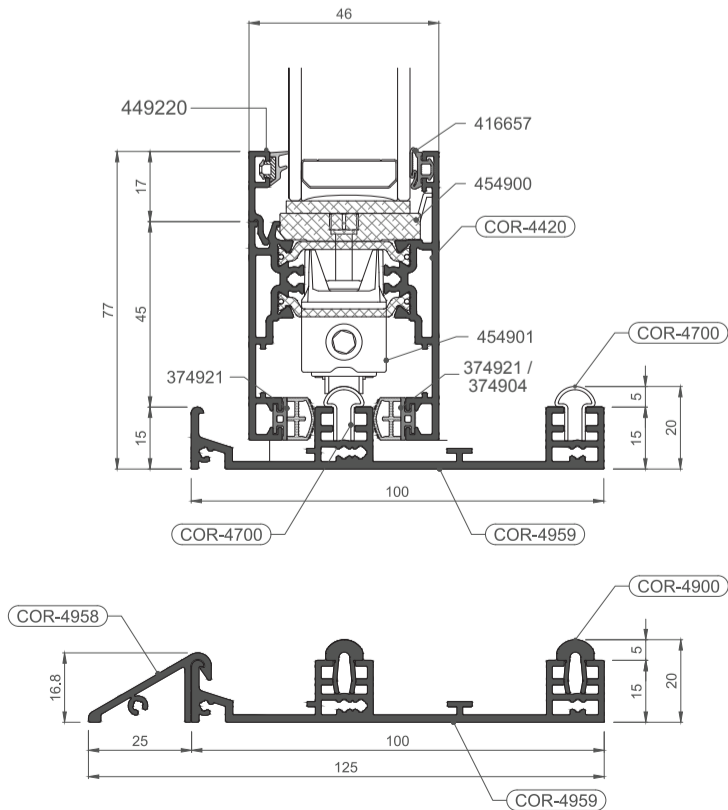
**Double-Track Bottom**



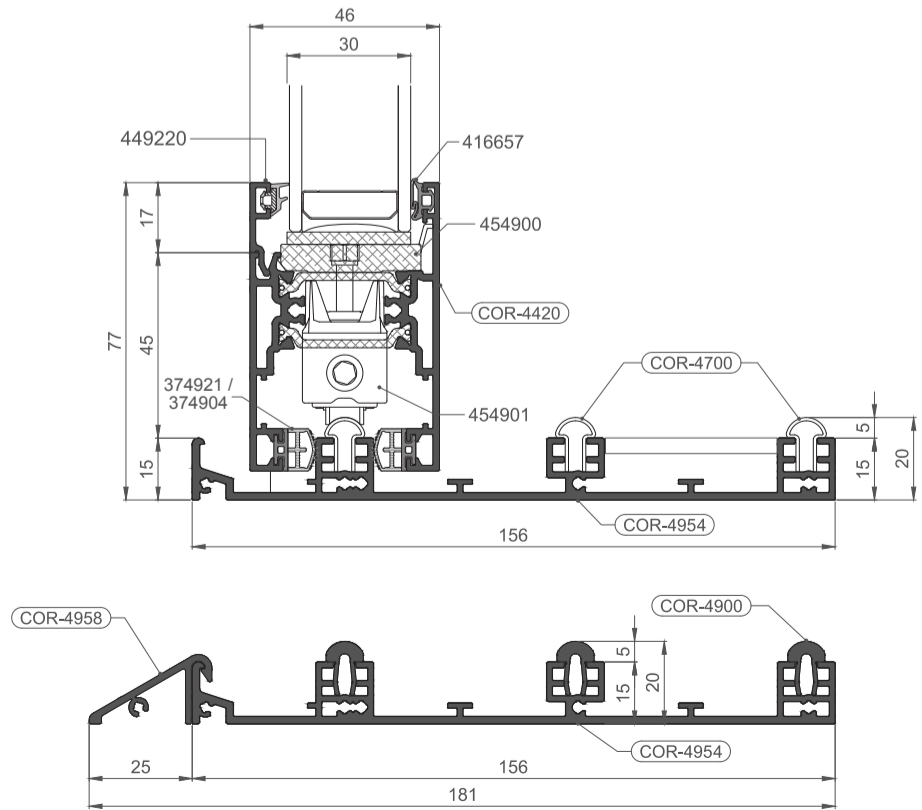
**Triple-Track Bottom**



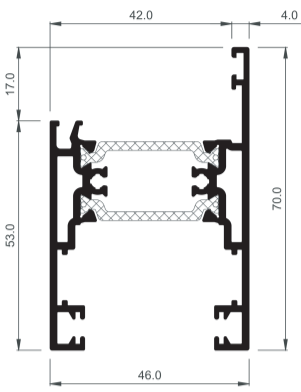
**Double-Track Low Threshold**



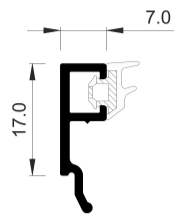
**Triple-Track Low Threshold**



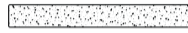
**COR-4420**  
Sash



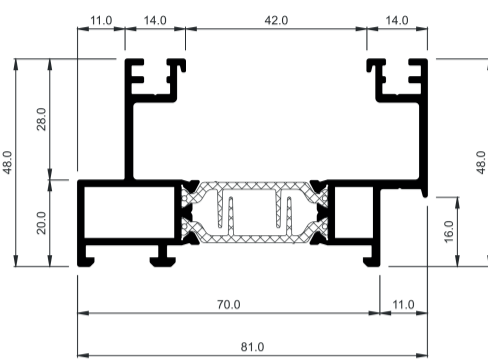
**449220**  
Bead with gasket



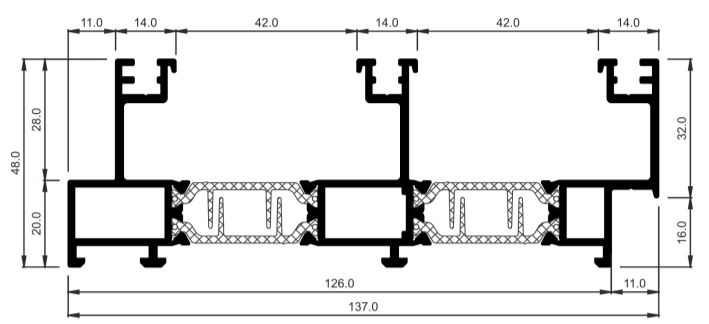
**320023**  
Insulating foam



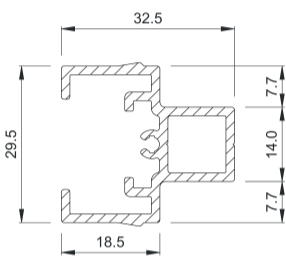
**COR-4930**  
Double-track frame



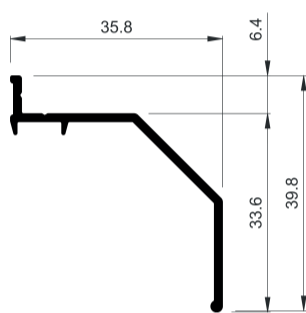
**COR-4940**  
Triple-track frame



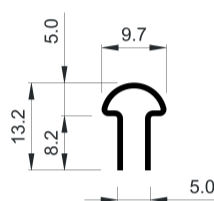
**4908**  
Four-pane meeting style



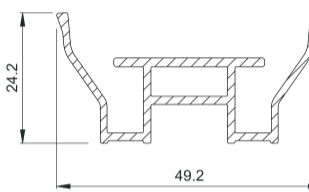
**4910**  
Rain gutter



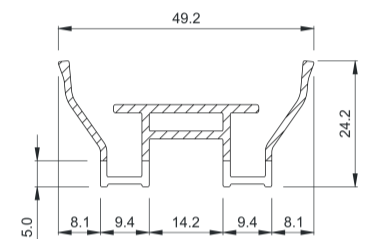
**4700**  
Running rail



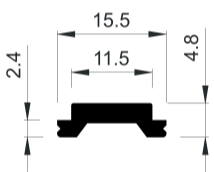
**4907**  
Frame cover



**4917**  
Cover profile



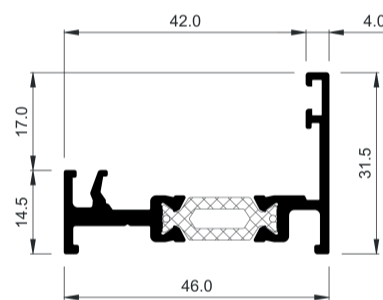
**7299**  
Support plate  
for meeting style



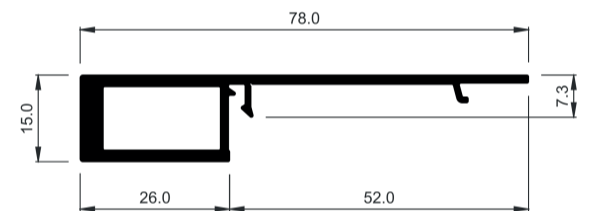
**4415**  
Reduced sash cover



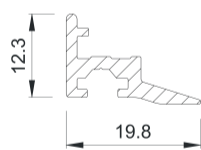
**4421**  
Interlock



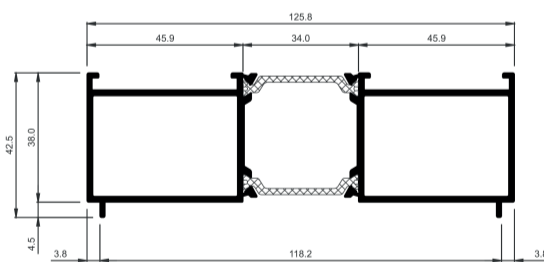
**4416**  
Interlock reinforcing  
(over 2400mm)



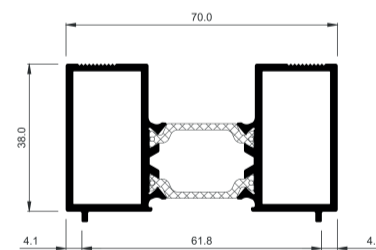
**4408**  
Interlock cover



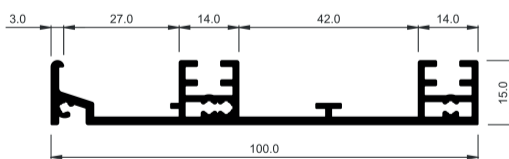
**774770**  
Triple-track 38mm add on



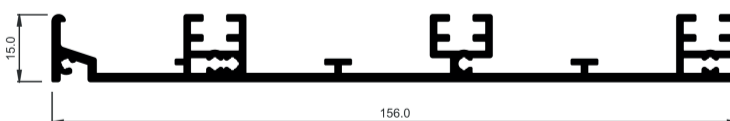
**COR-3846**  
Double-track 38mm add on



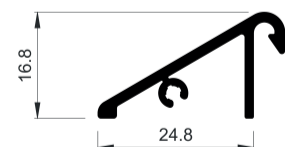
**COR-4959**  
Double-track low threshold  
(not weather rated - 5-7 week lead time. Anodised silver)



**COR-4954**  
Triple-track low threshold  
(not weather rated - 5-7 week lead time. Anodised silver)

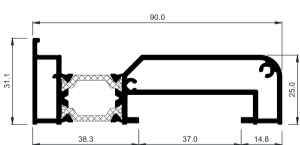


**COR-4958**  
Low threshold ramp  
(not weather rated - 5-7 week lead time. Anodised silver)

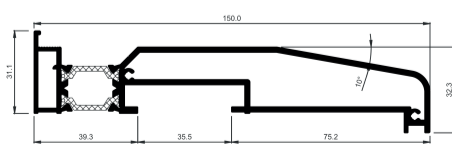


## CILLS

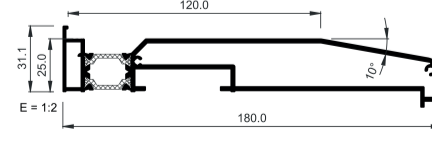
**3836**  
90mm Cill\*



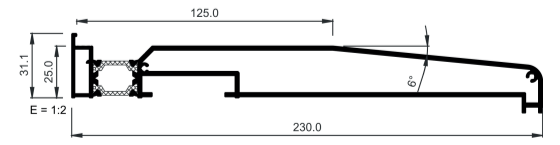
**3735**  
150mm Cill\*



**3837**  
180mm Cill

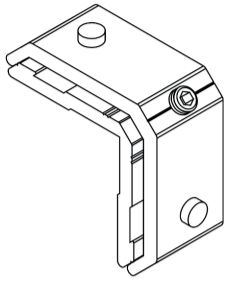


**3838**  
230mm Cill

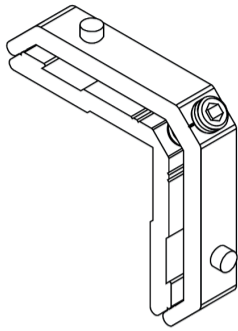


\*Not suitable for triple-track

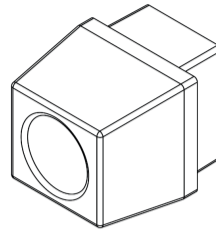
**374934**  
Cleat



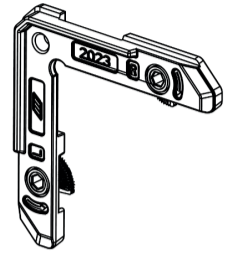
**374935**  
Cleat



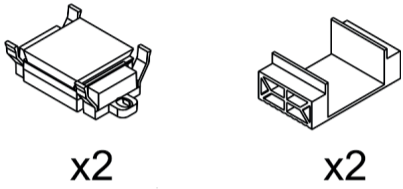
**384922**  
Limit top sash lock



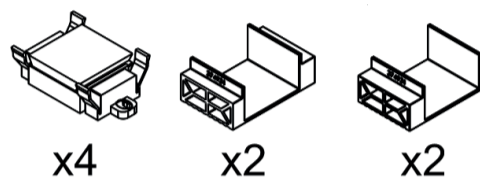
**423756**  
Alignment corner cleat



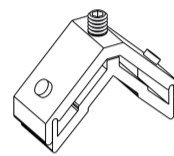
**434930**  
Wind seal kit 2-pane



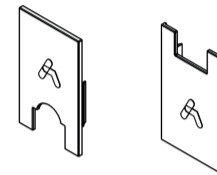
**434932**  
Wind seal kit 3-pane



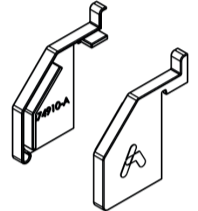
**264240**  
Cleat



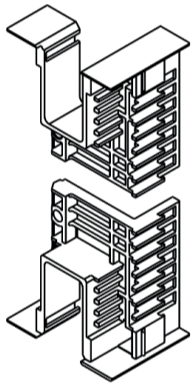
**374924**  
Caps for interlock



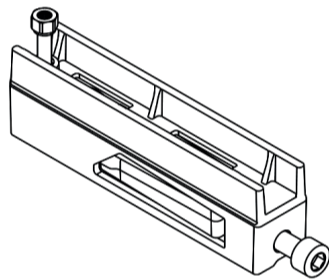
**374910**  
Rain gutter endcaps



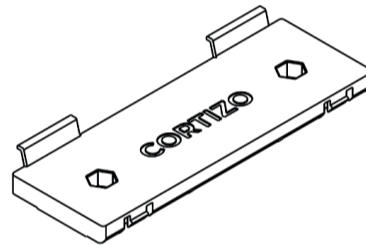
**444421**  
Reduced central sash covers set



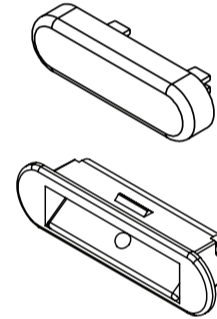
**454901**  
Sash roller



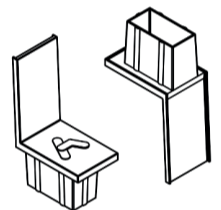
**454900**  
Sash roller glazing packer



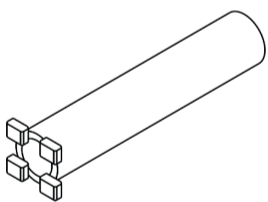
**454901**  
Drain cap (DBA1-DC)



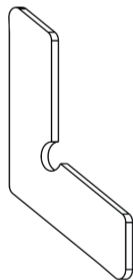
**434916**  
Reinforced interlock cap



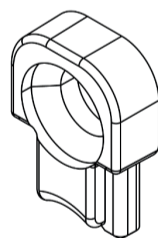
**310100**  
Drainage tube



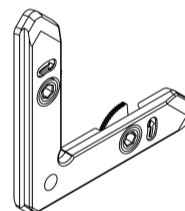
**217003**  
Chevron



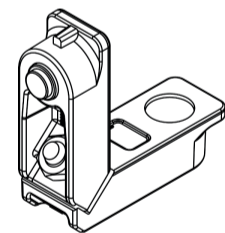
**291515**  
Anti-lifting frame



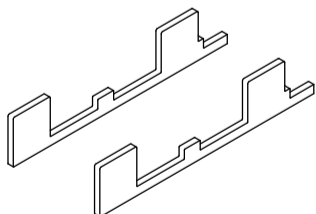
**296838**  
Alignment corner cleat



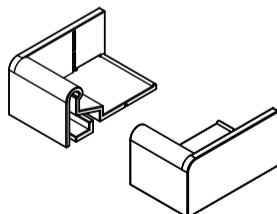
**347922**  
Injection corner cleat



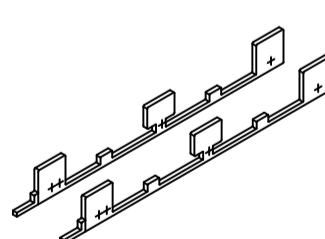
**404902**  
Double track low threshold end caps



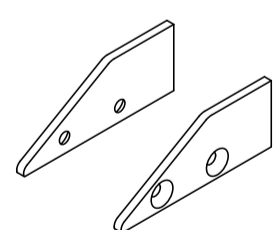
**404932**  
Low threshold end caps



**404904**  
Triple track low threshold end caps

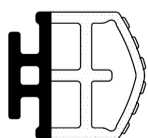


**404912**  
Low threshold ramp end caps

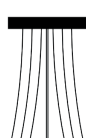


## GASKETS

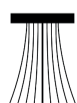
**374921**  
Sash perimeter gasket



**374904**  
Sash perimeter gasket



**330707**  
7x7mm TRIFIN wool pile



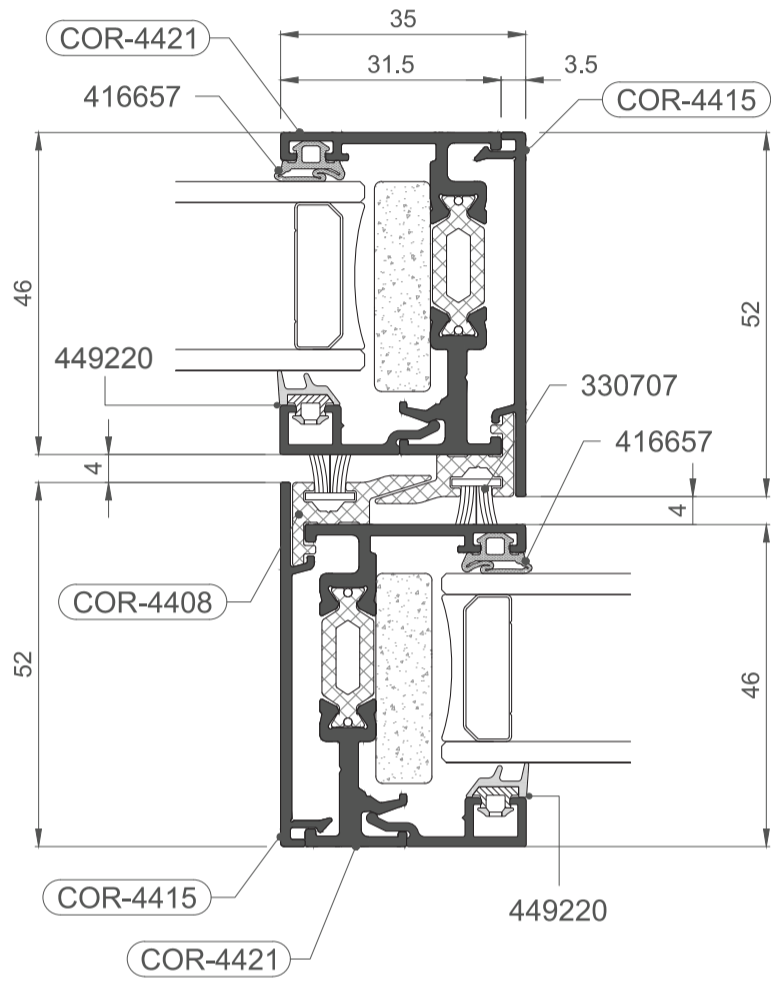
**324602**  
Groove cover gasket



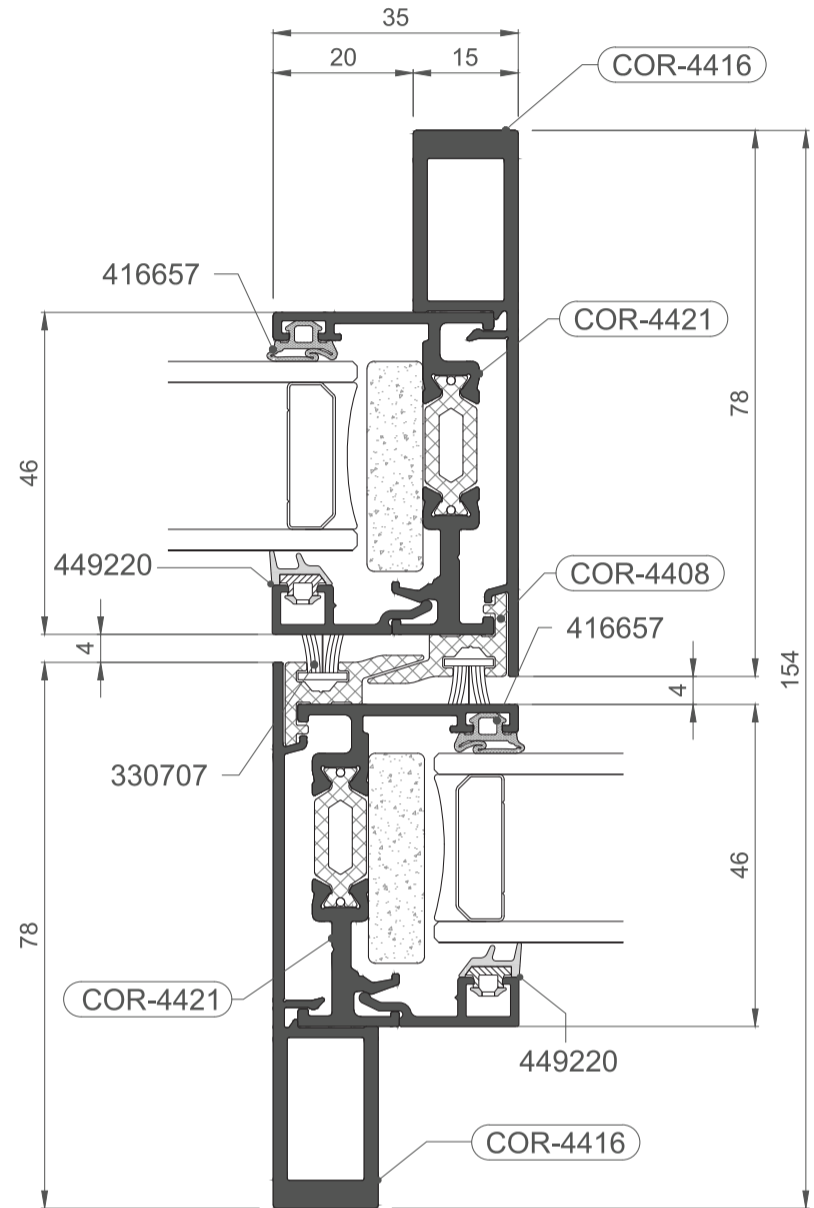
**416657**  
Exterior gasket for half-hidden sash



**Interlock**



**Reinforced Interlock**



**4-Pane Centre Section**

